



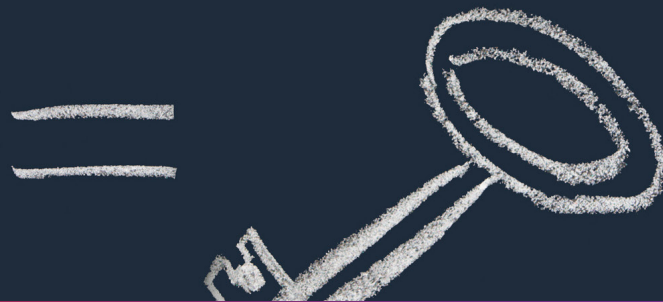
NeuRA

Discover. Conquer. Cure.

SCHIZOPHRENIA LIBRARY



education



SCHIZOPHRENIA Factsheet

August 2020

How is parental education related to schizophrenia?

There are other factors related to low parental education such as low socioeconomic status, urban living, stressful life events, and migrant status, all of which may influence any association found between parental education and schizophrenia in offspring.

What is the evidence for parental education?

Moderate quality evidence suggests a small to medium-sized increased odds of fewer years of parental education in people with schizophrenia compared to people without schizophrenia.

For more information see the technical table



NeuRA

Discover. Conquer. Cure.

NeuRA (Neuroscience Research Australia) is one of the largest independent medical and clinical research institutes in Australia and an international leader in neurological research.

Diseases of the brain and nervous system pose the greatest health, economic and social burden of any disease group because they are chronic, debilitating and have no known cures.

Medical research is the cornerstone of efforts to advance the health and wellbeing of families and the community. Our dedicated scientists are focussed on transforming their research into significant and practical benefits for all patients.

While we hope you find this information useful, it is always important to discuss any questions about schizophrenia or its treatment with your doctor or other health care provider.

HOW YOUR SUPPORT HELPS

We are able to make significant advances due to the generosity of countless people. Your donation allows us to continue to work towards transforming lives. For information on how you can support our research, phone **1300 888 019** or make a secure donation at neura.edu.au/donate/schizophrenia.

NeuRA (Neuroscience Research Australia) Foundation
T 1300 888 019 F +61 2 9399 1082
ABN 57 008 429 961

Margarete Ainsworth Building
Barker Street, Randwick NSW 2031
PO Box 1165 Randwick Sydney NSW 2031 Australia

neura.edu.au